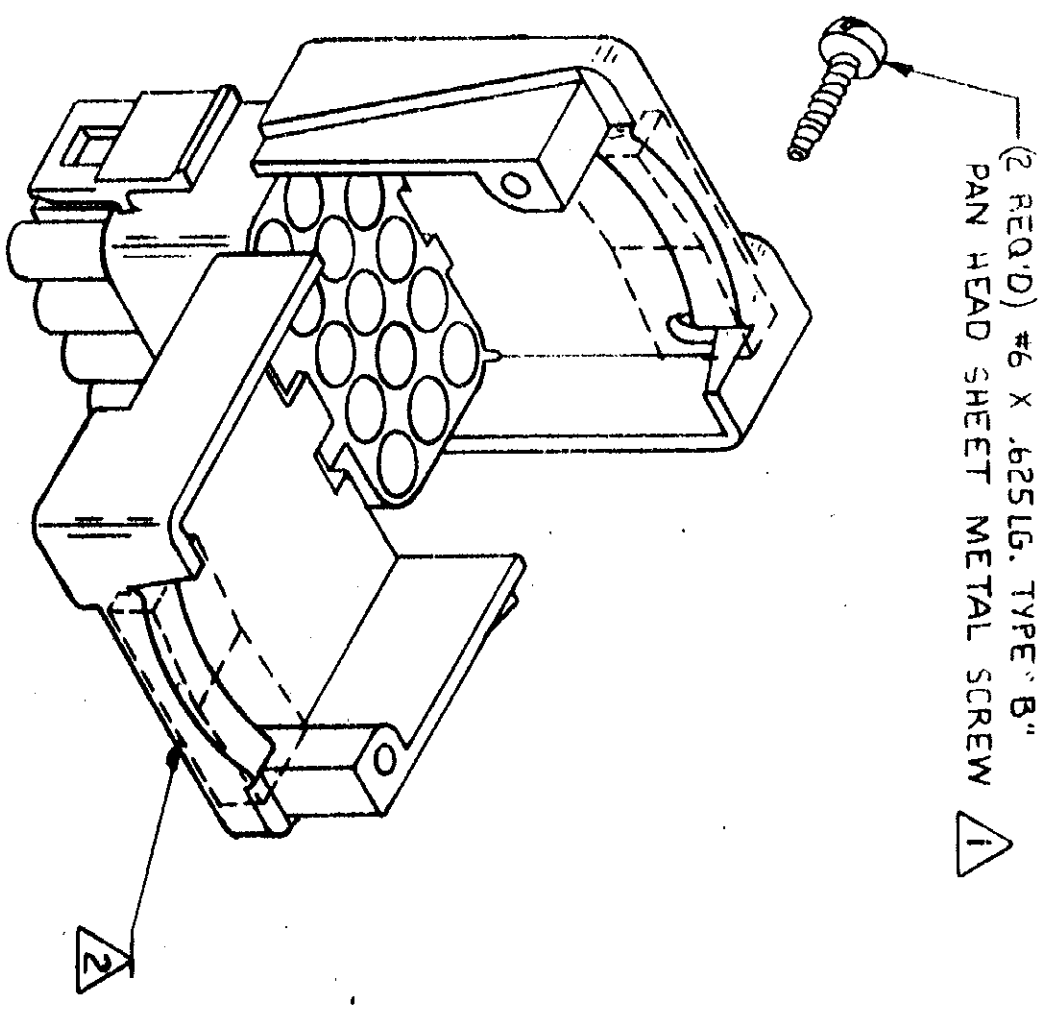
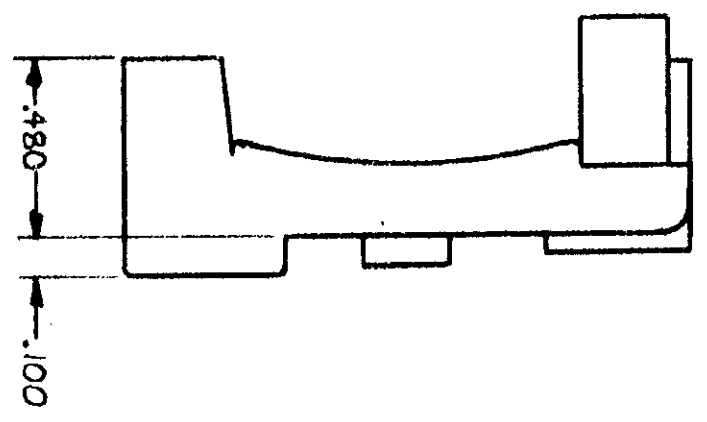
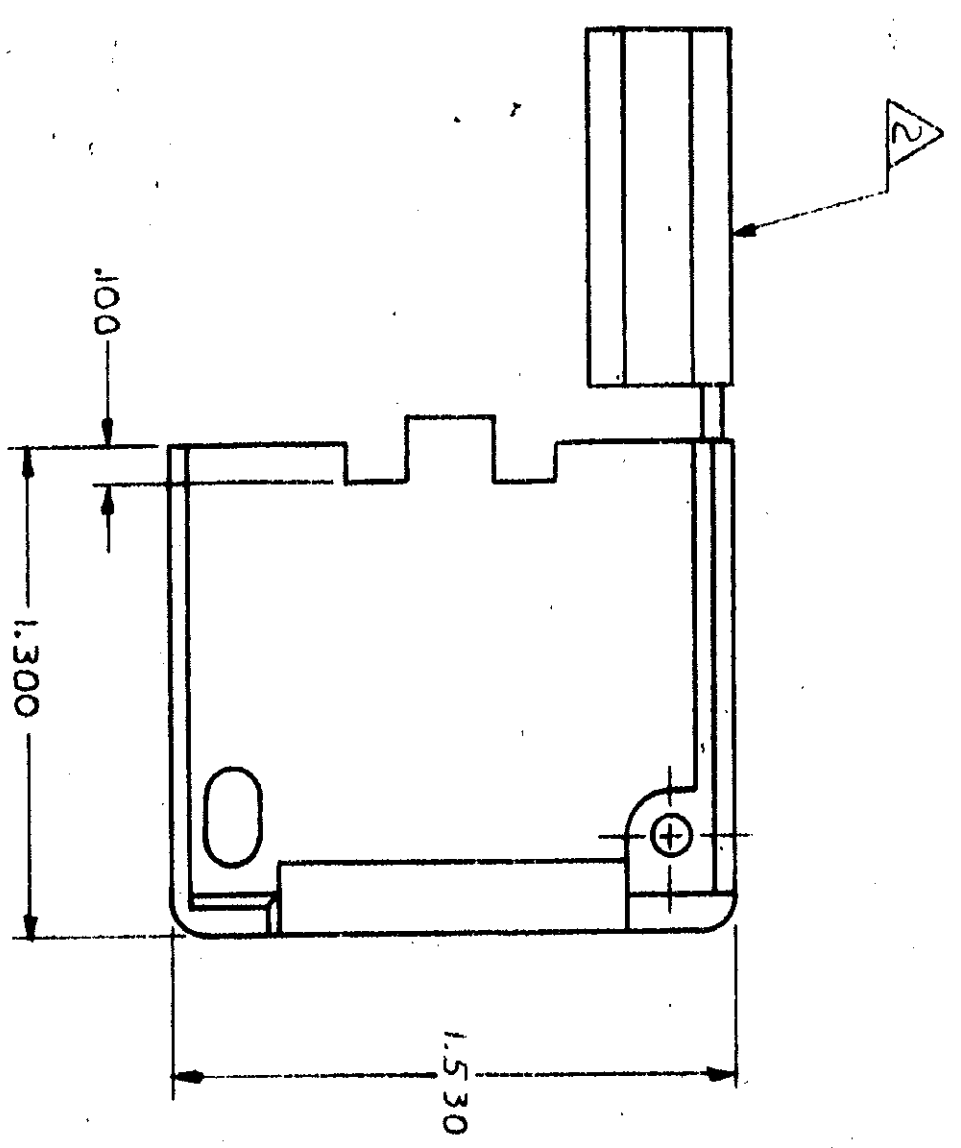
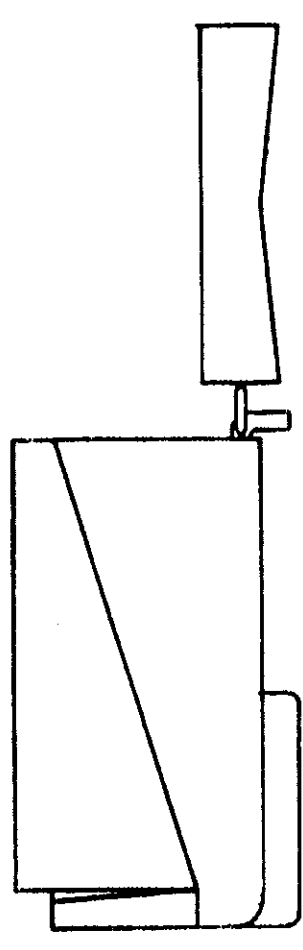


© COPYRIGHT 1978 BY AMP INCORPORATED, HARRISBURG, PA. ALL INTERNATIONAL RIGHTS RESERVED. AMP INCORPORATED PRODUCTS COVERED BY U. S. AND FOREIGN PATENTS AND/OR PATENTS PENDING.

- 1 SHEET METAL SCREWS NOT SUPPLIED.
- 2 INSERT IS ATTACHED TO STRAIN RELIEF AS AN ADDITIONAL ADJUSTMENT FOR SMALL WIRE BUNDLES; IT SHOULD BE CUT OFF AND POSITIONED AS SHOWN BY DOTTED LINES.
- 3 TWO REQUIRED PER CONNECTOR.
- 4 DETACHABLE INSERT MAY SEPARATE FROM STRAIN RELIEF BODY DURING SHIPPING.



REVISIONS					
P	F	ZONE/LTR	DESCRIPTION	DATE	APPROVED
✓	✓	A	REVISED AND REDRAWN PER M-5186	3-2-79	MSE/AM
✓	✓	A1	RESTORATION	6-28-85	ST/RS
✓	✓	B	REV PER ECN CM 705	12/16/85	TS/RS

WIRE BUNDLE DIA	WITHOUT INSERT	.950 MAX
	WITH INSERT	.200 MIN

UNLESS OTHERWISE SPECIFIED DIMENSIONS ARE IN INCHES. TOLERANCES ON: DECIMALS ± .015 ANGLES

MATERIAL: SEE TABLE  
FINISH: SEE TABLE

CONTRACT NO: 3-12-79  
DR: J. FEHER  
CHK: J.S. Haida 3/22/79  
APPD: J. Feher 3-22-79  
DSGN APPD:  
OTHER APPD:

NAME: STRAIN RELIEF FOR 15 CIRCUIT UNIVERSAL MATE-N-LOK™ CONNECTOR

SIZE CODE IDENT NO: 00779  
DRAWING NO: 640724

NATURAL  
COLOR: COLD R  
MATERIAL: NYLON 94V-2  
PART NO: 1-640724-0/3

SCALE: 2-1  
SHEET: 1 OF 1